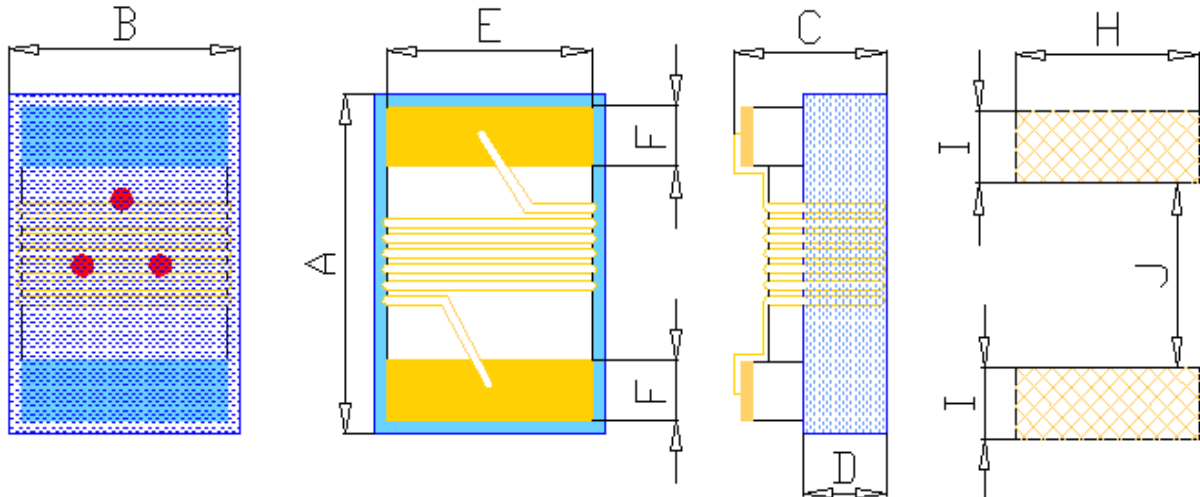


### 1.SHAPE AND DIMENSIONS(UNIT:mm)



### 2.Product Identifications:

CRC
□ □ □ □ □
—
□ □ □ □
  

**1**
**2**
**3**
**4**

① Product Symbol

② Dimensions code: 0603C/0805C/1008C Type

③ Inductance(For details please refer to the specification tables)

④ Tolerance: G=±2% J=±5% K=±10% M=±20%

ITEM	A(max)	B(max)	C(max)	D(ref)	E±0.1	F±0.1	G±0.1	H±0.1	I±0.1	J±0.1
CRC0603C	1.80	1.12	1.02	0.38	0.76	0.33	0.86	1.02	0.64	0.64
CRC0805C	2.25	1.70	1.42	0.70	1.27	0.51	1.03	1.78	1.02	0.76
CRC1008C	2.92	2.79	2.23	0.51	2.03	0.51	1.52	2.54	1.02	1.27